



# COVID-19 situation update for the EU/EEA and the UK, as of 10 May 2020

Epidemiological update

***The data presented on this page has been collected between  
6:00 and 10:00 CET***

***Disclaimer: National updates are published at different times and in different time zones. This, and the time ECDC needs to process these data, may lead to discrepancies between the national numbers and the numbers published by ECDC. Users are advised to use all data with caution and awareness of their limitations. Data are subject to retrospective corrections; corrected datasets are released as soon as processing of updated national data has been completed.***

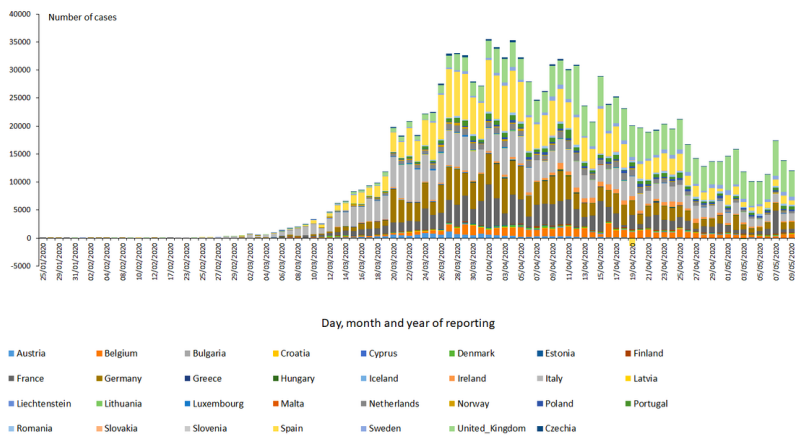
How is the data collected? (<https://www.ecdc.europa.eu/en/covid-19/data-collection>)

As of 10 May 2020, **1 239 428 cases** have been reported in the EU/EEA and the UK: Spain (223 578), Italy (218 268), United Kingdom (215 260), Germany (169 218), France (138 854), Belgium (52 596), Netherlands (42 382), Portugal (27 406), Sweden (25 921), Ireland (22 760), Austria (15 777), Poland (15 651), Romania (15 131), Denmark (10 319), Czechia (8 095), Norway (8 069), Finland (5 880), Luxembourg (3 877), Hungary (3 263), Greece (2 710), Croatia (2 176), Bulgaria (1 955), Iceland (1 801), Estonia (1 733), Slovakia (1 455), Slovenia (1 454), Lithuania (1 444), Latvia (930), Cyprus (892), Malta (490) and Liechtenstein (83).

As of 10 May 2020, **146 700 deaths** have been reported in the EU/EEA and the UK: United Kingdom (31 587), Italy (30 395), Spain (26 478), France (26 310), Belgium (8 581), Germany (7 395), Netherlands (5 422), Sweden (3 220), Ireland (1 446), Portugal (1 126), Romania (926), Poland (785), Austria (615), Denmark (526), Hungary (413), Czechia (276), Finland (265), Norway (213), Greece (151), Luxembourg (101), Slovenia (101), Bulgaria (90), Croatia (87), Estonia (60), Lithuania (50), Slovakia (26), Cyprus (21), Latvia (18), Iceland (10), Malta (5) and Liechtenstein (1).

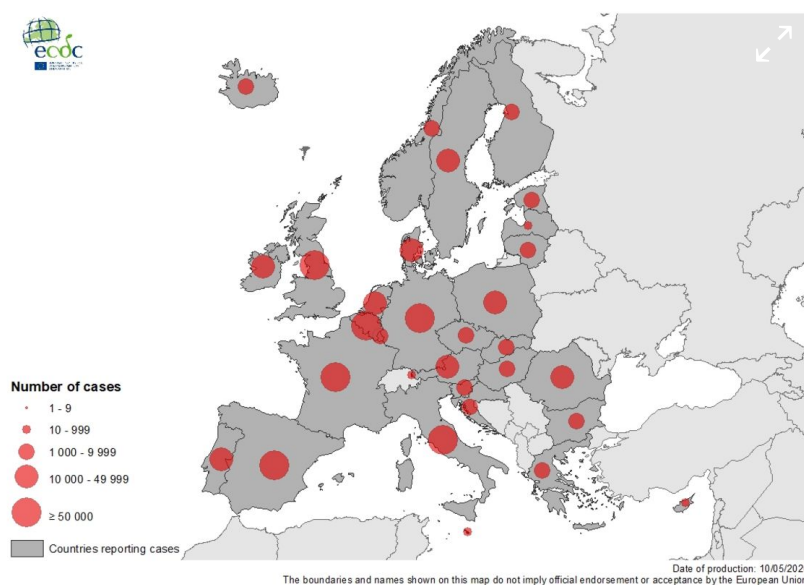
<b>EU/EEA and the UK</b>	<b>Sum of Cases</b>	<b>Sum of Deaths</b>	<b>Reported cases per 100 000 population</b>	<b>Reported deaths per 100 000 population</b>
Spain	223578	26478	478.5	56.7
Italy	218268	30395	361.2	50.3
United_Kingdom	215260	31587	323.8	47.5
Germany	169218	7395	204.1	8.9
France	138854	26310	207.3	39.3
Belgium	52596	8581	460.5	75.1
Netherlands	42382	5422	246.0	31.5
Portugal	27406	1126	266.5	11.0
Sweden	25921	3220	254.5	31.6
Ireland	22760	1446	468.9	29.8
Austria	15777	615	178.3	7.0
Poland	15651	785	41.2	2.1
Romania	15131	926	77.7	4.8
Denmark	10319	526	178.0	9.1
Czechia	8095	276	76.2	2.6
Norway	8069	213	151.8	4.0
Finland	5880	265	106.6	4.8
Luxembourg	3877	101	637.9	16.6
Hungary	3263	413	33.4	4.2
Greece	2710	151	25.3	1.4
Croatia	2176	87	53.2	2.1
Bulgaria	1955	90	27.8	1.3
Iceland	1801	10	509.4	2.8
Estonia	1733	60	131.2	4.5
Slovakia	1455	26	26.7	0.5
Slovenia	1454	101	70.3	4.9
Lithuania	1444	50	51.8	1.8
Latvia	930	18	48.3	0.9
Cyprus	892	21	75.0	1.8
Malta	490	5	101.3	1.0
Liechtenstein	83	1	218.9	2.6
<b>Total</b>	<b>1239428</b>	<b>146700</b>		

# Distribution of laboratory confirmed cases of COVID-19 in the EU/EEA and the UK, as of 10 May 2020



① Distribution of laboratory confirmed cases of COVID-19 in the EU/EEA and the UK

# Geographic distribution of COVID-19 in the EU/EEA and the UK, as of 10 May 2020



① Geographic distribution of COVID-19 in the EU/EEA and the UK

# More data resources

(/en/publications-data/download-todays-data-geographic-distribution-covid-19-cases-worldwide)

## **Download today's data on the geographic distribution of COVID-19 cases worldwide**

The downloadable data file is updated daily and contains the latest available public data on COVID-19. You may use the data in line with ECDC's copyright policy.



(https://qap.ecdc.europa.eu/public/extensions/Situation-dashboards/-/COVID-19/COVID-19-dash.html)

## **Situation dashboard - COVID-19 cases in Europe and worldwide**

The interface allows users to explore and interact with latest available data on COVID-19 and switch chart to tables view for details.

The situation dashboard now includes more detailed data on cases from the EU/EEA and the UK.

The number of cases and deaths can be shown within a specific date range and by country. Enhanced data is available on a subset of cases and includes age, gender, hospitalisation and admission to intensive care.



Please note that the boundaries and names shown on this dashboard do not imply official endorsement or acceptance by the European Union.

The data shown are updated on daily basis (see the date of the latest update in the footnote). Some features might not work in Internet Explorer, so please use another browser.

## Read more

(/en/geographical-distribution-2019-new-cases)

### **COVID-19 situation update worldwide, as of 10 May 2020**

📍 Asia



(/en/search?f%5B0%5D=geo%3A641) |

Coronavirus

(/en/search?f%5B0%5D=diseases%3A2943) |

COVID-19

(/en/search?f%5B0%5D=diseases%3A2942) |

📦

(/en/covid-19/data-collection)

### **How ECDC collects and processes COVID-19 data**



📍 COVID-19

(/en/search?f%5B0%5D=diseases%3A2942) |

Public health threat

(/en/search?f%5B0%5D=public\_health\_areas%3A1583)

---

📍 COVID-19

(/en/search?f%5B0%5D=diseases%3A2942) |

Public health threat

(/en/search?f%5B0%5D=public\_health\_areas%3A1583)

Page last updated 10 May 2020

---

## More on this topic

**Laboratory  
support  
for  
COVID-19  
in the  
EU/EEA**

Laboratory  
support

**Risk  
assessment  
on  
COVID-19,  
23 April  
2020**

ECDC risk  
assessments

(for aim  
primary/~~and~~  
or supporting  
confirmat~~by~~  
testing) EU/EEA  
by countries  
Coronavir~~us~~  
specialist~~the~~  
laborator~~ies~~ European  
in Commission  
the in  
EU their  
Read preparedness  
more and  
> response

**Q**  
(/en/novel-to  
&  
**A**  
coronavirus  
/laboratory-  
on support) public  
**COVID-19** health

threat.  
What They  
is provide  
COVID-19? a  
Why timely  
should summary  
the and  
virus risk  
be assessment  
closely of  
monitored? a  
How public  
easily health  
does threat  
COVID-19 for  
spread? EU/EEA  
Read countries  
more related  
>

to  
(/en/covid-  
19/questions-  
answers) specific  
event.  
They  
also  
include  
potential  
options  
for

response

Read

more

European

Centre

(/en/current-

risk-

Disease

assessment-

Prevention

and

novel-

coronavirus-

Control

situation)

(ECDC)

2020